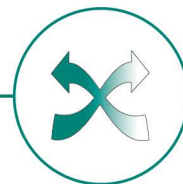
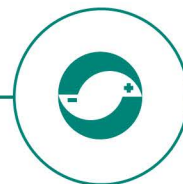


AeroWing
air inlet



AeroX
heat exchanger



AeroComp
wind compensation

AEROSolution

The climate of your choice!

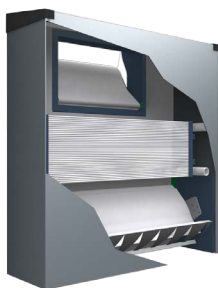
- Calm and constant air movement at the animal's level
- A constant temperature in the house and sufficient ventilation
- Less risk of draught and health problems
- Minimum external climate influences
- Possible reuse of energy from the ventilation air

AEROSolution: Better safe than sorry

The prime aspect of a healthy climate in an animal house is good air distribution at the right temperature, and at the animal's level. Sufficient air exchange is also necessary to remove any CO₂, ammonia and dust. Furthermore, external climate influences, like wind and the outside temperature, must be prevented from disturbing the ideal climate in the house. The Stienen BE AeroSolution offers a total solution and, where possible, removes these disturbing elements before they can affect the climate in the house. This ensures a good living environment with minimum energy usage and reduces the need to administer medication.



AEROSolution: Three steps to a perfect climate



1

Problem

No constant air flow

Solution

AeroWing: An air inlet giving a constant and independent throw of the incoming air. The AeroWing gives the incoming air a 22-degree angle along its entire range of operation. This ensures that the air throw is always optimal and enables us to guarantee a constant air throw, even when there is only minimal ventilation.

2

Problem

Wind disturbs the air distribution

Solution

AeroComp: Wind compensation to control the right pressure in the animal house. Guaranteeing a constant air flow at the animal's level is only possible if external wind influences are minimised. Stienen BE solves this by installing a compensation valve before the air intake. Wind blowing onto the house from one side creates a pressure difference that disrupts the ventilation pattern in the house. If the compensation valve on the wind side is then closed by the control system, the pressure difference and the air distribution through the inlets stay the same on both sides of the house. In the event of turbulent weather, the total pressure over the house is increased further, thus compensating as much as possible for any pressure variations.

3

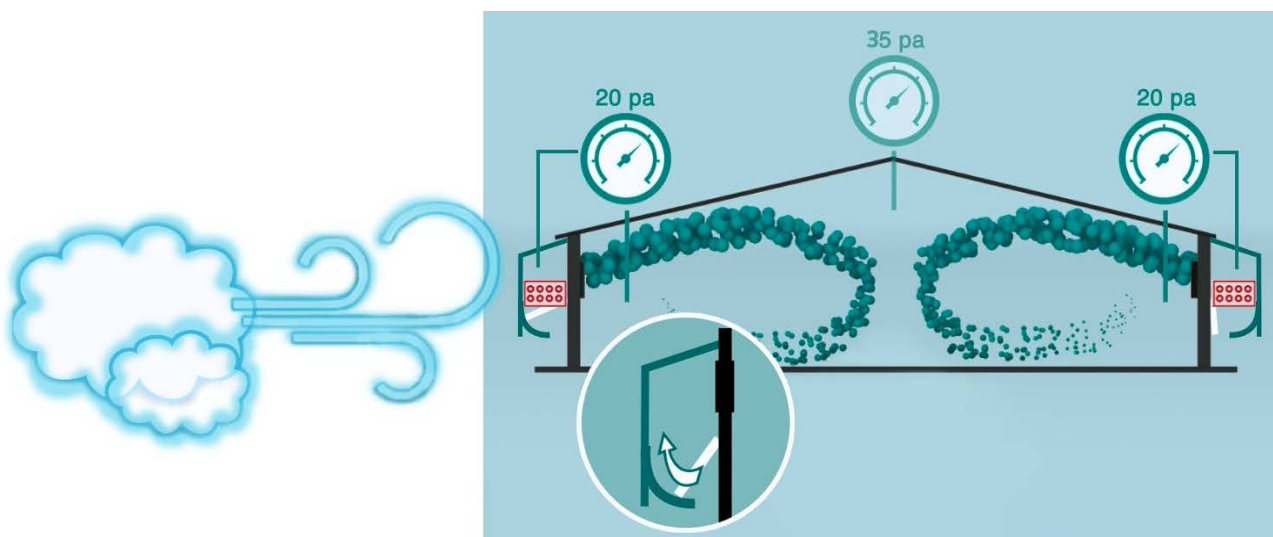
Problem

Outside temperature disrupts the climate in the animal house

Solution

AeroX: A heat exchanger that pre-conditions the incoming air. To minimise the influences of a high or low outside temperature on the climate in the house, Stienen BE has introduced the AeroX.

This heat exchanger is placed between the compensation valve and the air inlet in order to efficiently heat or cool the incoming air. This enables the relative humidity to be lowered in summer and the minimum ventilation level to be increased in winter. This directly benefits the climate in the house and, as a result, your animals' wellbeing. The energy needed for this water/air heat exchanger is generated by an external source of energy (e.g. a heat pump or biogas) or is recovered from the air that is being exited from the house.



YouTube EN ANIMATION AEROSOLUTION